

Tacoma
Retail Sales Tax New Location Codes
Effective January 1, 2022

Effective January 1, 2022, new location codes are established within certain areas of the Puyallup Tribe's boundary. Lodging activity between non-tribal businesses and non-tribal members within these areas, defined by the attached maps, should be reported to location code 5141. The new location code represents a reporting change only; **the rate has not changed**.

The location code for lodging businesses with 26 rooms or more is:

Location	Location Code	Retail Sales Tax Rate	Lodging Tax Rate	Total Combined Tax Rate
Puyallup Tribe – Tacoma Lodging	5141	.086	.05	.136

The location code for lodging businesses with 25 rooms or fewer is:

Location	Location Code	Retail Sales Tax Rate	Lodging Tax Rate	Total Combined Tax Rate
Puyallup Tribe – Tacoma	2741	.103	.02	.123

For tribal owned or tribal member owned businesses, please continue to report to the existing location code.

To determine the proper codes and rates of local sales tax, you may access our Tax Rate Lookup Tool located at dor.wa.gov. On the home page, click on the **Find a sales and use tax rate** link.

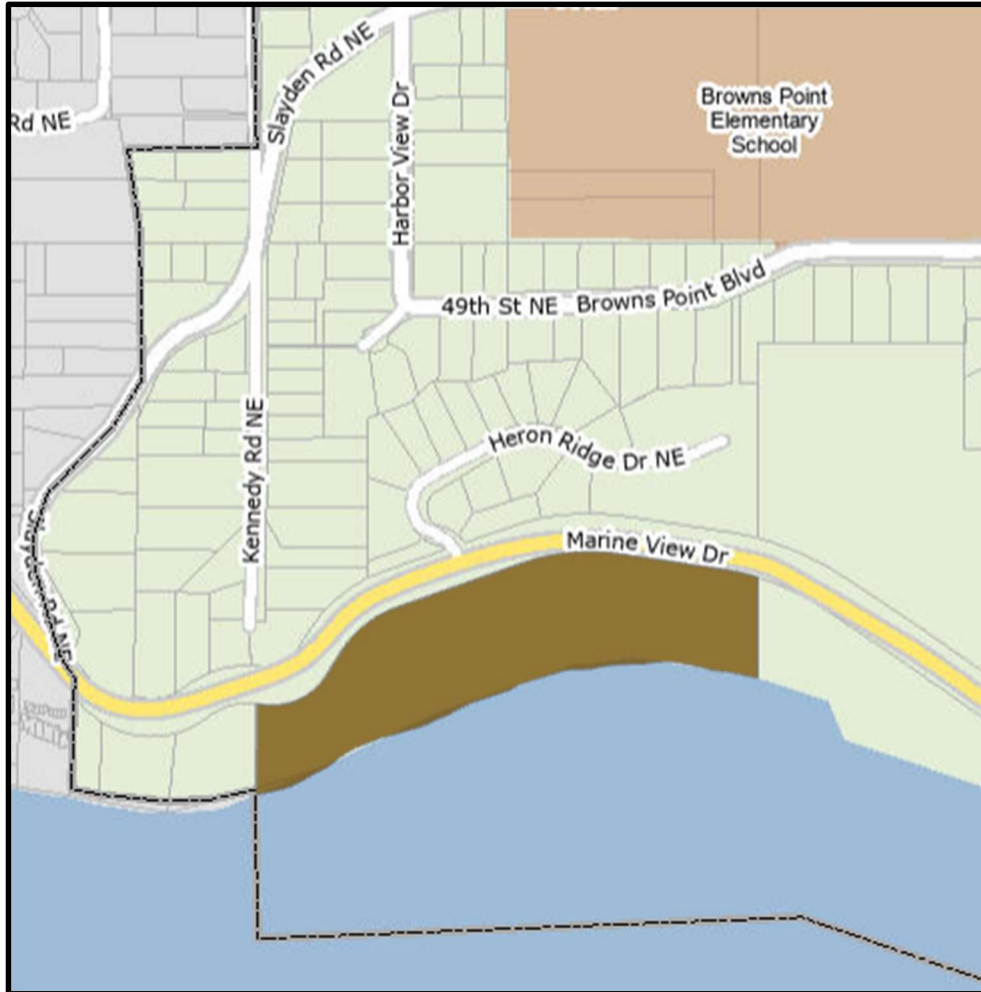
This notice is being sent to businesses that have reported local sales or use tax to Tacoma within the last year.

If you have questions, or if Sales Tax Collection Schedules are needed, please go to our website at dor.wa.gov or call the Department of Revenue at 360-705-6705.

Puyallup Tribe – Tacoma Lodging (5141)

Lodging activity between non-tribal businesses and non-tribal members in the brown colored area that is within Tacoma should be reported to location code 5141.

To determine the proper codes and rates of local sales tax, we recommend you access our Tax Rate Lookup Tool located at dor.wa.gov. On the home page, click on the **Find a sales and use tax rate** link.

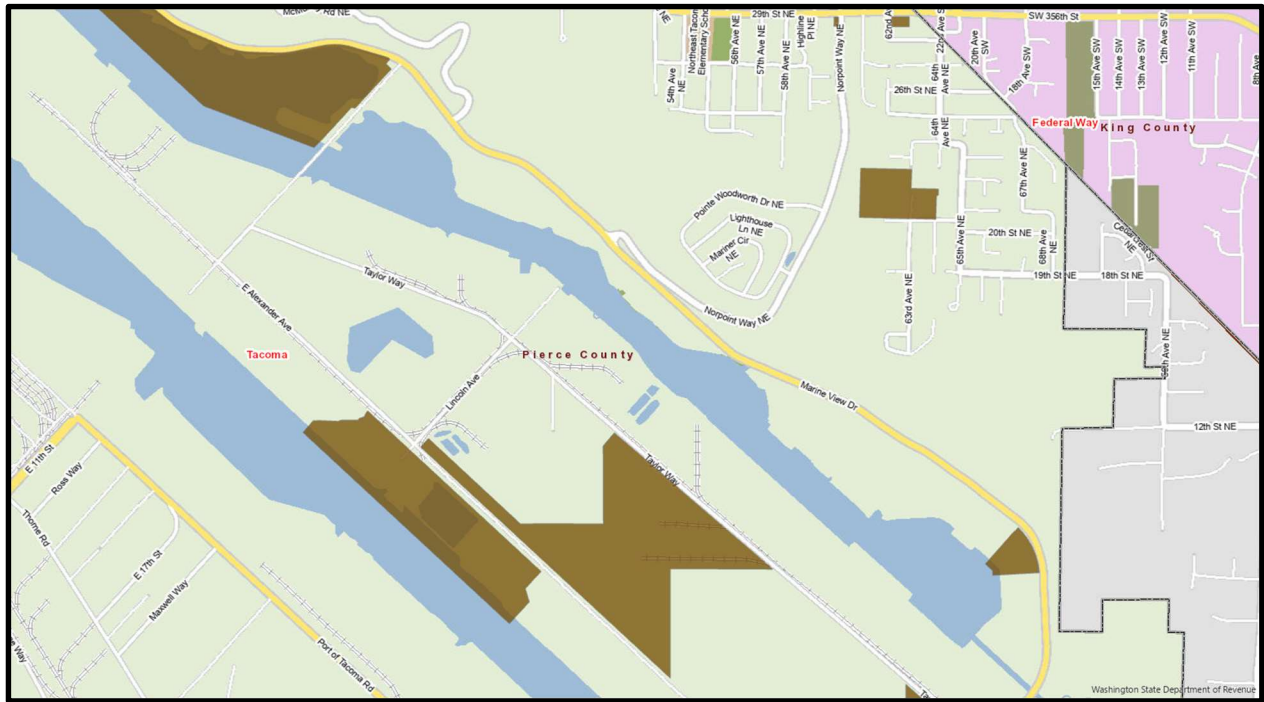


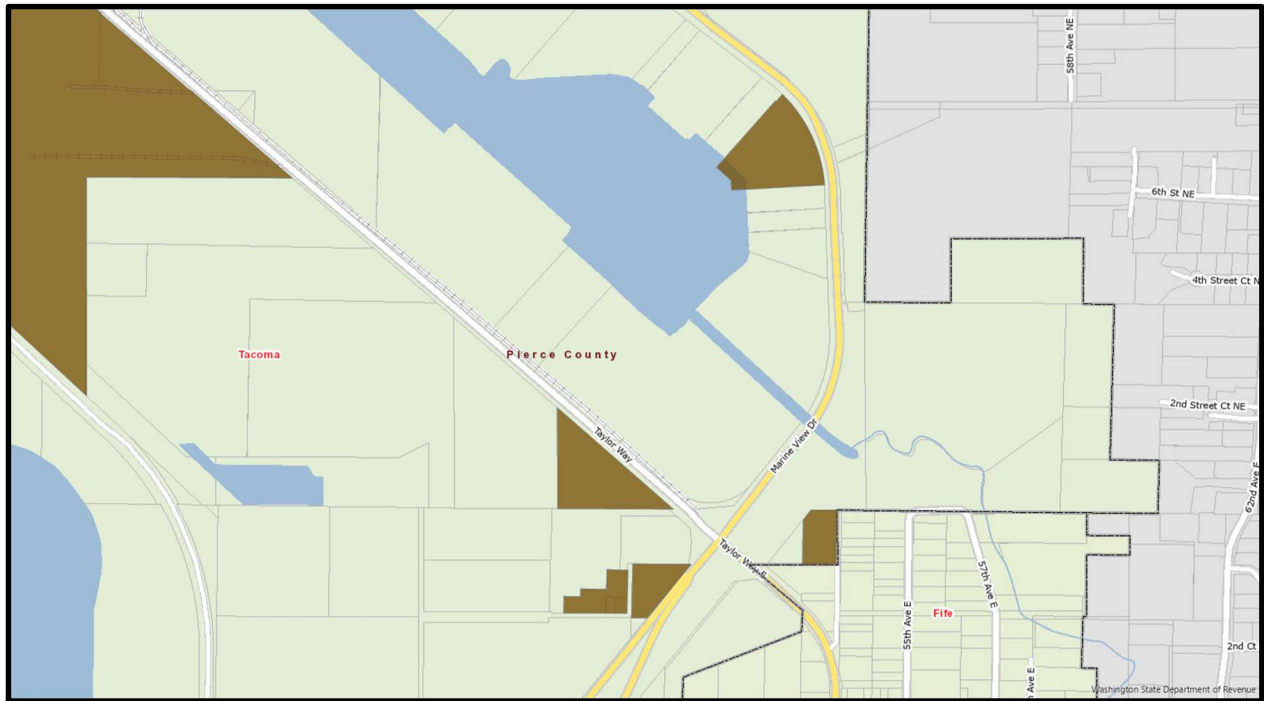
State of Washington
Taxpayer Account Administration
PO Box 47476
Olympia WA 98504-7476

For tax assistance or to request this document in an alternate format please call 360-705-6705. Teletype (TTY) users may use the Washington Relay Service by calling 711.

(REV 11-1-21)

WASHINGTON STATE DEPARTMENT OF REVENUE LOCAL SALES TAX CHANGE

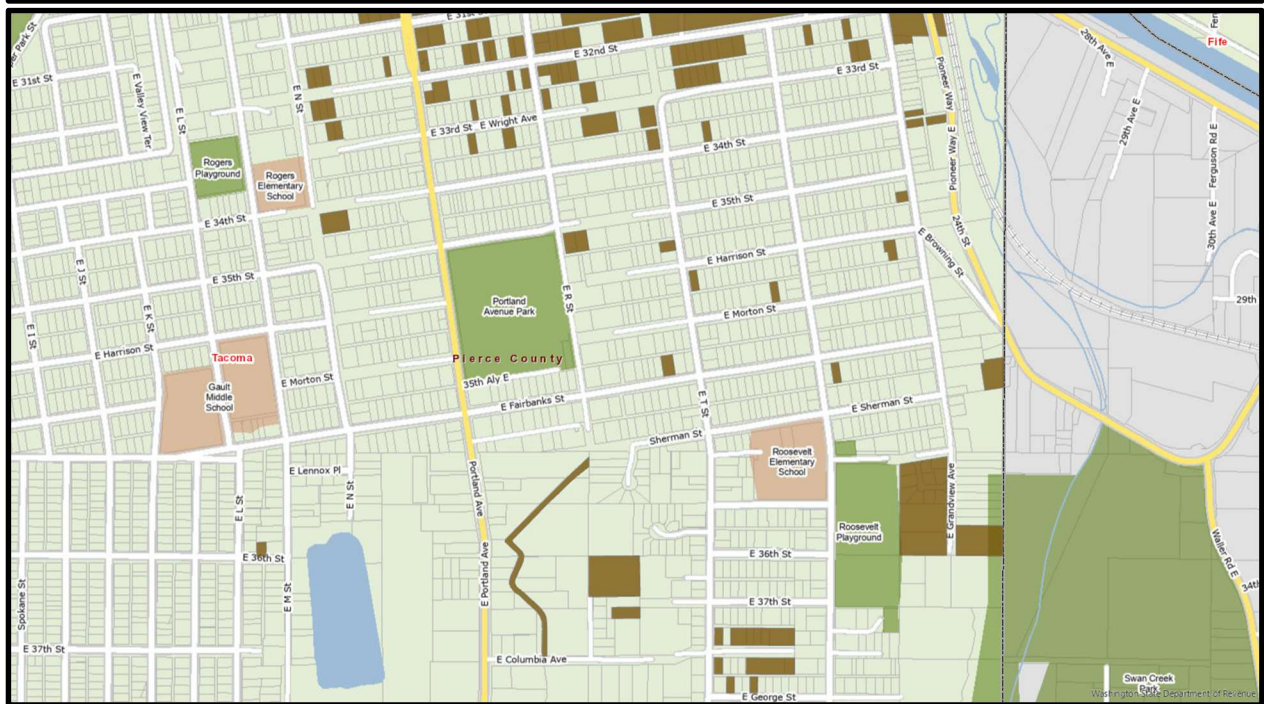
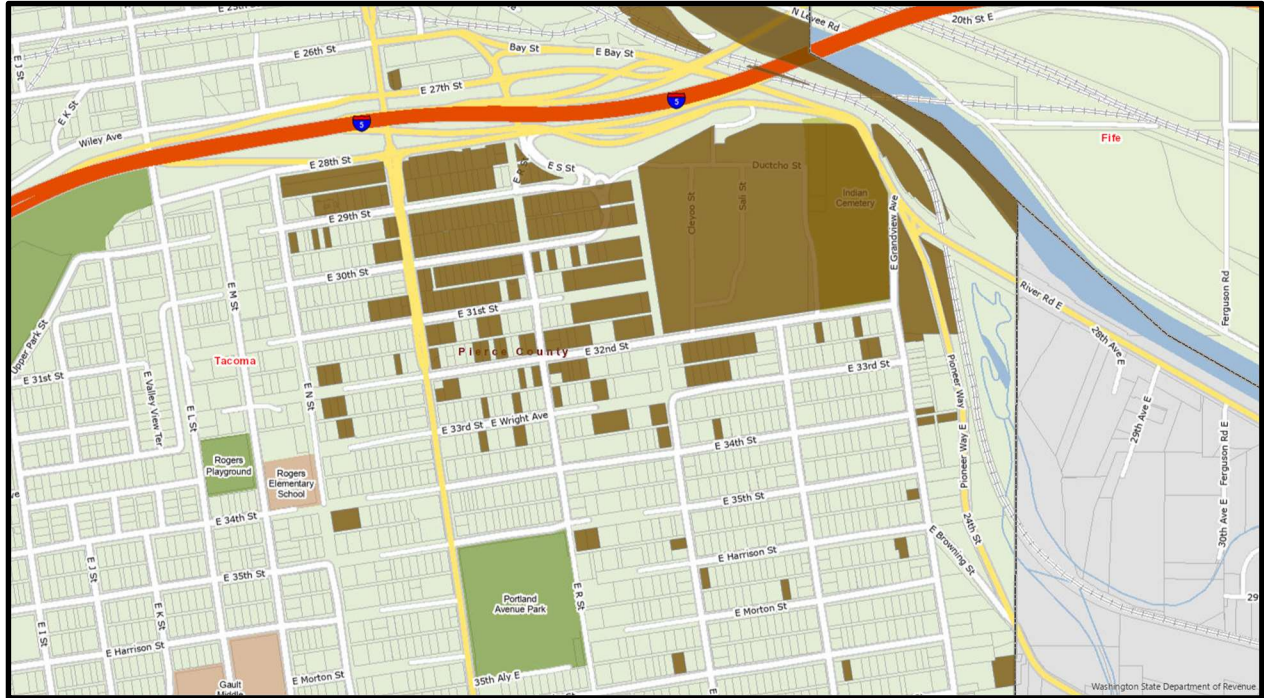


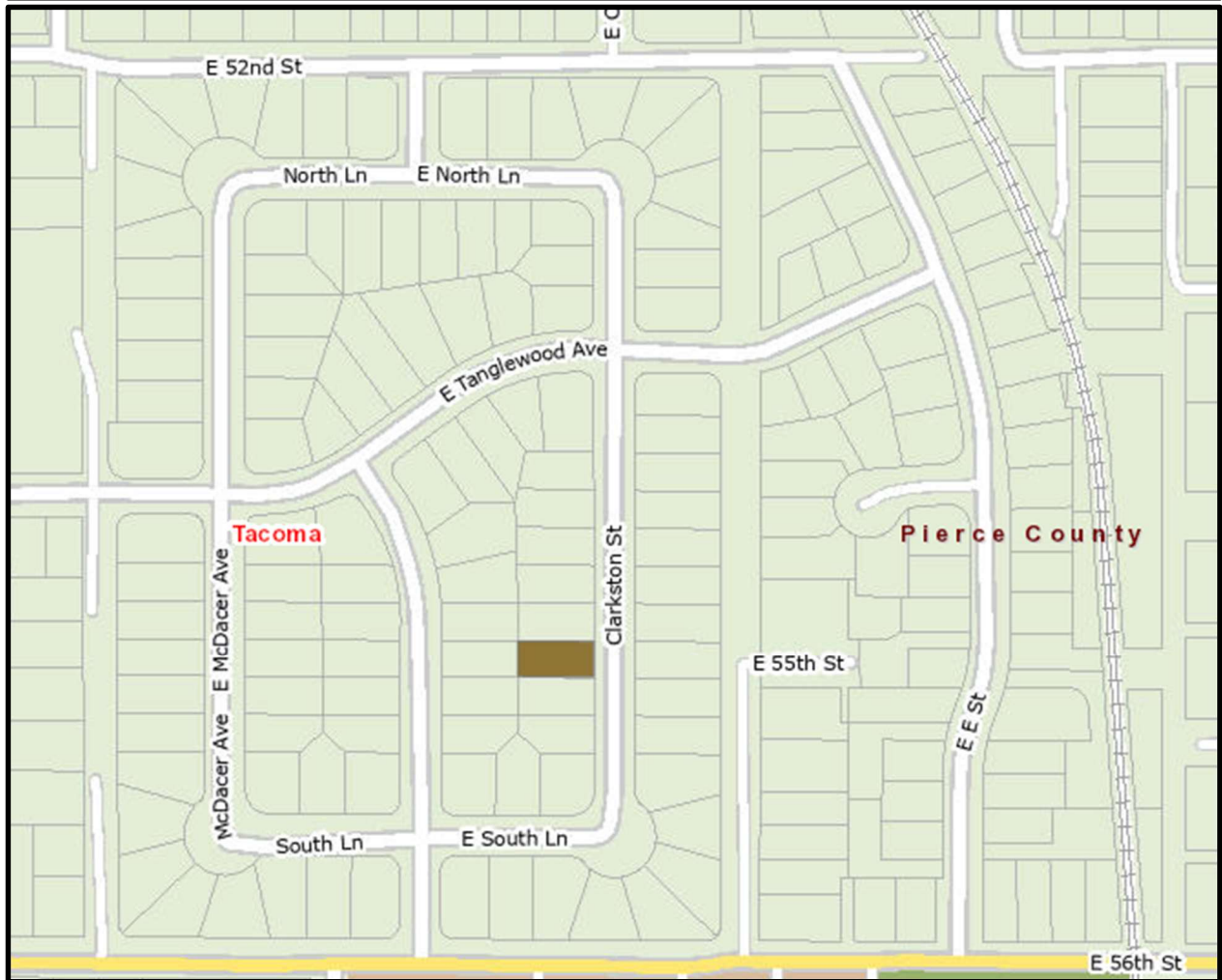
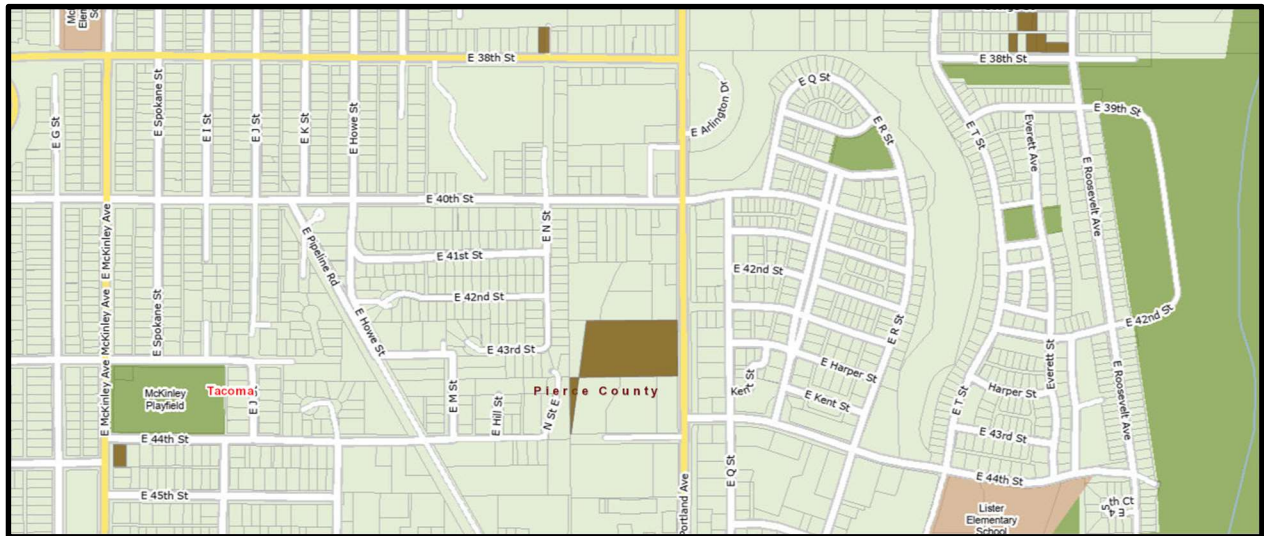


State of Washington
Taxpayer Account Administration
PO Box 47476
Olympia WA 98504-7476

For tax assistance or to request this document in an alternate format please call 360-705-6705. Teletype (TTY) users may use the Washington Relay Service by calling 711.

(REV 11-1-21)





State of Washington
Taxpayer Account Administration
PO Box 47476
Olympia WA 98504-7476

For tax assistance or to request this document in an alternate format please call 360-705-6705. Teletype (TTY) users may use the Washington Relay Service by calling 711.

(REV 11-1-21)